



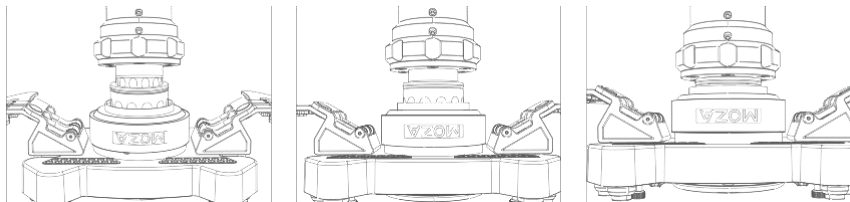
RS V2 Steering Wheel



01 Product Description

- Dual-Clutch Photoelectric Magnetic Paddles.
- RGB Programmable Flow Shift Light.
- 10 illuminated programmable mechanical Keys
- Racing Quick Release
- Aluminum Alloy Back Shell

02 How to Use the Quick Release OR Quick Release Setup



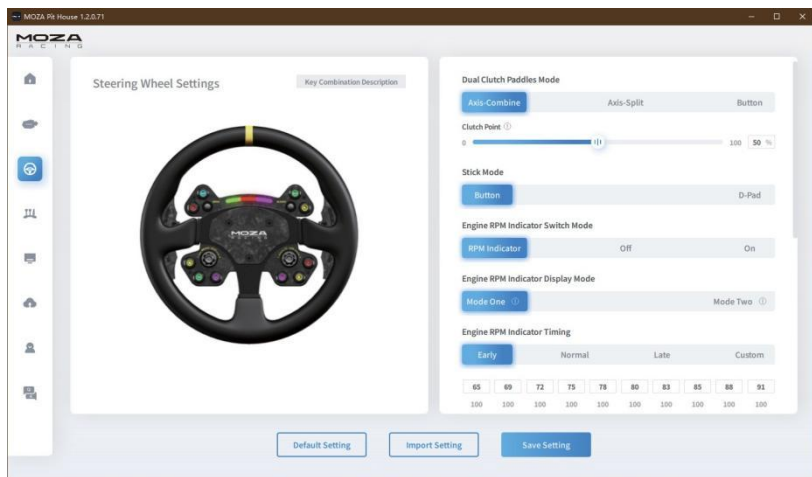
1. Align the 6 steel balls on the steering wheel quick release female connector to the corresponding 6 grooves on the base quick release male connector.
2. Press the steering wheel down to join the connectors.
3. Once locked check to ensure the steering wheel is connected to base by rotating the wheel.
4. To remove the steering wheel, pull up the golden sleeve with both hands and remove the steering wheel at the same time.

03 Racing Wheel Configuration

The steering wheel can be set conveniently and quickly in the MOZA Pit House suite software.

- Down paddle mode: Set the mode of double clutch paddles, which can be set as left and right composite axes, left and right independent axes and keys.
- Speed follow-up: Turn on or off the linkage between LED shift indicator and speed.
- Indicator display mode: It is divided into mode 1 and mode 2. When the mouse moves over the option, a detailed explanation will pop up.
- Speed prompt setting: It is divided into advance type, standard type and limit type, according to the relationship between speed and the time when the shift indicator light is on.
- Brightness adjustment: Adjust the brightness of the shift indicator.
- Dial calibration: click here to calibrate the dial if the dial sensing is abnormal.
- Indicator Light Color Adjustment: 7 colors can be set separately for each LED, adjust the color of the MOZA Flow shifter according to your preferences.

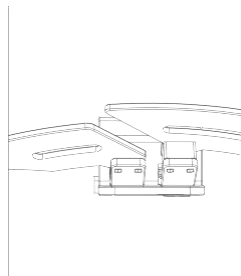
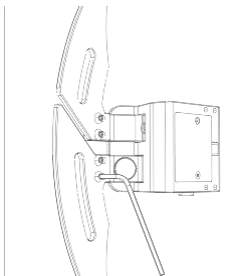
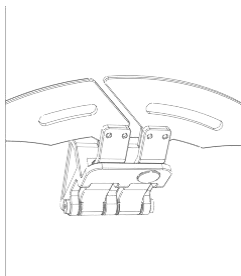
Enter the debugging mode by pressing buttons in a sequence. You can set the color of the illuminated button as follows: Press and hold the thumb knobs (BRAKE BIAS and TC CON) on the left and right at the same time until the gear shift indicator flashes, and then enter the button setting mode. Each time you press the button, you can change a color, and there are 9 colors in total.



(for detailed steering wheel settings and functions, please visit the official website of MOZA Racing)

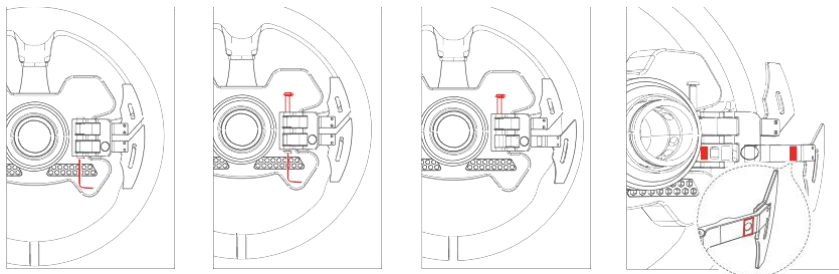
04 Installation of Paddle Approach Block

Place the steering wheel on a flat surface facing down, use a hexagonal wrench to remove the screw on the side of the trigger lever of the shift paddle, and then use a wrench to lift the latch from the side of the magnetic paddle, and pull the trigger lever of the paddle outward to obtain the best space for disassembling and assembling paddles; use a hexagonal wrench to remove the screws on the shift paddles, put on the heightening block and tighten with the long screws, and finally put the latch back in place and tighten screws. The heightening block can help shorten the distance between the magnetic shifter paddles and hands by 8mm.



05 Installation of Magnetic Suction Paddle Mute Pad

Place the steering wheel on a flat surface, with the front facing down. Use a hexagonal wrench to remove the screw on the side of the trigger lever, then use a wrench to lift the latch from the side of the magnetic paddle (NOTE: you do not need to push it out completely. Just separate the trigger lever and the latch would be fine). Apply the first silencer pad on the back of the magnetic hole and the square hole on the shifter paddle (if it is inconvenient to operate, you can lift the latch completely). Apply the other silencer pad to the position of the paddle base as shown in the picture. Finally return the latch into place and tighten the screws.



For more information and tutorial videos, please log in to the official website (www.mozaracing.com).

06 Packing List

1. RS steering wheel
2. tool kit:

Hexagon screwdriver

8mm aluminum alloy approach block x4

M3x14 screw x8

Mute pad x4

07 Product Spec

Frame material: Brushed aluminum alloy.

Panel material: Forged Carbon Fiber.

Rear shell material: Aluminum alloy.

Paddle material: 3mm thick forged carbon fiber

Size: 13 inches (325mm).

Magnetic paddle: 2.

Double clutch paddles: 2.

Mechanical keyboard texture buttons: 10 (can be illuminated, 9 colors adjustable)

20 Section knob (can be pressed): 2. **Universal rocker (can be depressed):** 2. **Highlight led RGB beads:** 10.

LED color: 7-color custom.

Intelligent telemetry: Supported.

Lights setting via Moza Pit House: Supported.

Steering Wheel Quick Release: MOZA Racing Quick Release.

Power supply mode: Wireless or Wire.

Signal transmission mode: Wireless or Wire

Induction mode of magnetic paddle: Photoelectric.

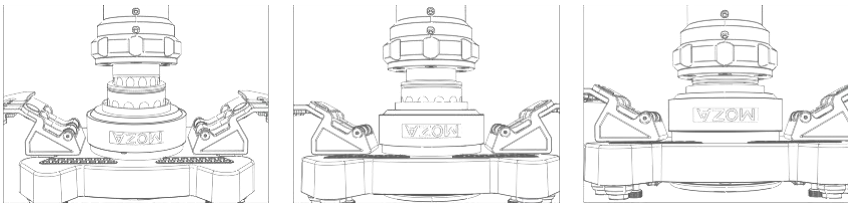
Magnetic suction paddle mode:

Double Clutch / Single Clutch / Switch.

01 产品介绍

- 光电磁吸双离合拨片
- RGB 流水换档指示灯
- 10 个发光可编程机械键盘式按键
- 赛用级快拆
- 铝合金后壳

02 快拆使用方法



1. 将方向盘快拆母头上 6 颗钢珠的位置与底座快拆公头的 6 个凹槽对应
2. 将快拆往盘面方向按压
3. 快拆将自动归位锁紧，若无归位，可尝试轻微转动盘面或取下后再安装
4. 如需拆取盘面，用双手捏住金色部分，同时拔出盘面

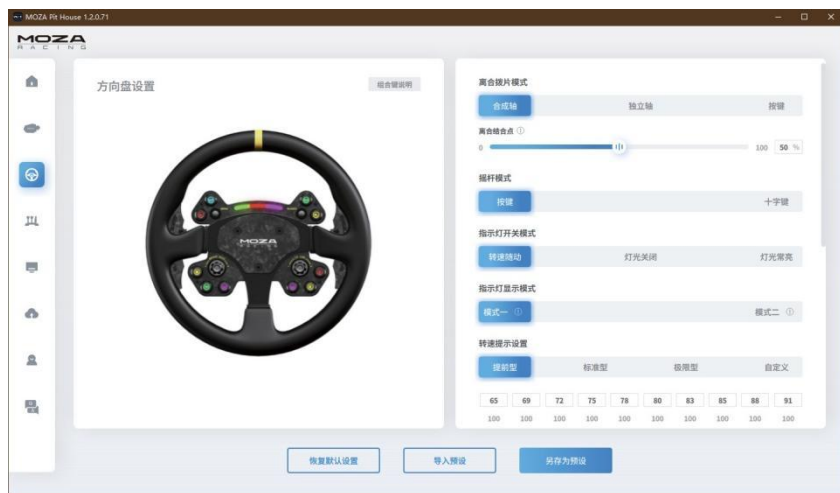
03 方向盘配置

在 MOZA Pit House 软件中可以方便快捷地对方向盘进行设置。

- 下拨片模式：设置双离合拨片的模式，分别可设置为左右合成轴，左右独立轴和按键
- 转速随动：开启或关闭 LED 换档指示灯与转速的联动
- 指示灯显示模式：共分为模式一和模式二，当鼠标移动到选项上时会弹出详细解释
- 转速提示设置：根据转速与换档指示灯亮起的时机关系，分为提前型，标准型和极限型
- 亮度调节：调节换档指示灯的亮度
- 拨片校准：当拨片感应异常时，通过点击此处进行拨片校准
- 指示灯颜色调节：可对每一颗 LED 单独进行 7 种颜色设置，将喜欢的色块拖动到指示灯上即可更换颜色

通过快捷键进入调试模式，可以设置发光按键的颜色，具体操作如下：

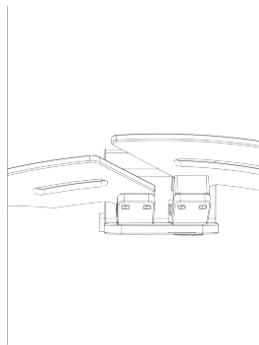
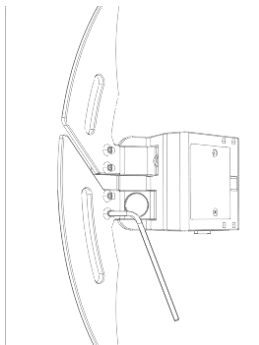
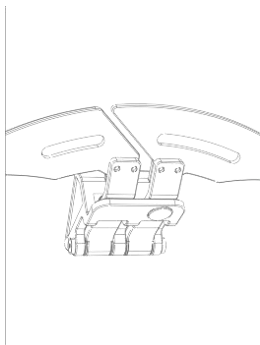
同时按住左右两侧的旋钮（BRAKE BIAS 和 TC CON），直至换挡指示灯黄色爆闪，此时进入按键设置模式，每按压按键一次，可更换一种颜色，共有 9 种颜色可变。



(详细方向盘设置与功能，请访问 MOZA Racing 官网)

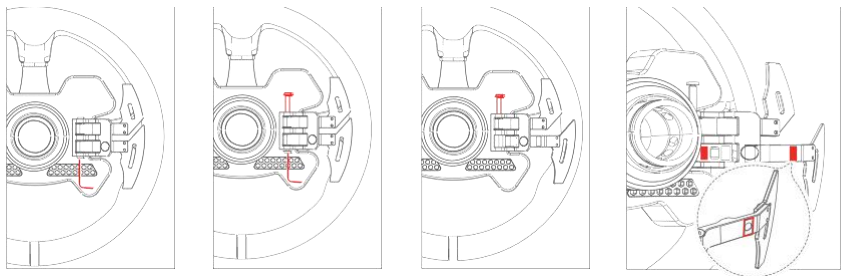
04 拨片接近块的安装

将方向盘放置于平面上使盘面朝下，使用六角扳手取下换挡拨片触发杆一侧的螺丝，再用扳手从磁吸拨片侧顶开插销，将拨片触发杆向外拉以获得拆装拨片的最佳空间；使用六角扳手将换挡拨片上的螺丝取下，垫上增高块后用附带的长螺丝拧紧，最后将插销归位并装回螺丝，通过此垫片可将拨片与手的距离拉近 8mm。



05 磁吸拨片静音垫的安装

将方向盘放置于平面上使盘面朝下，使用六角扳手取下换挡拨片触发杆一侧的螺丝，再用扳手从磁吸拨片一侧顶开插销（无需完全顶出，仅使磁吸拨片触发杆与插销可以分离即可），然后将静音垫贴在磁铁孔背面与拨片座上的方孔外侧位置（如不方便操作，可以先将换挡拨片取下，然后将换挡触发杆从拨片座上分离出来），切勿将静音垫贴在方孔上（此处为拨片光电开关感光区域，静音垫覆盖上去会影响拨片功能）如图所示，最后将插销归位并装回螺丝。



更多信息和教学视频请登录官网进行查阅

06 包装清单

1. RS 方向盘
2. 工具包：

六角螺丝刀 8mm 铝
合金接近块 x4 M3x14
螺丝 x8 静音垫 x4

07 产品参数

骨架材质：拉丝铝合金 面板材质：锻造碳纤维 后壳材质：航空级铝合金 拨片材质：3mm 厚锻造碳纤维 尺寸：13 英寸（325mm） 磁吸拨片：2 个 双离合拨片：2 个 机械键盘盘感按键：10 个（可发光，9 色可调） 20 段旋钮（可按压）：2 个 万向摇杆（可按压）：2 个

高亮 LED RGB 灯珠：10 颗 LED
色彩：7 色自定义智能遥测：支持
通过 MOZA Pit House 设置灯光：支持 拆装方式：定制赛车快拆 供电方式：无线或有线 信号传输方式：无线或有线 磁吸拨片感应方式：光电无接触式 磁吸拨片模式：双离合式/单离合式/开关式

产品保修卡

| | | | |
|------|--|------|--|
| 产品型号 | | 购买日期 | |
| 用户姓名 | | 用户电话 | |
| 产品条码 | | 通讯地址 | |

经销商信息（签章）

产品保修条例

保修期

自购机日起，基座主体，方向盘，踏板和仪表显示屏保修 12 个月。设备外壳、说明书、线材、螺丝、扳手、包装等不在“一年免费保修服务”范围内，但您可以选择有偿服务。购买者在以下条件下不享受免费保修服务，但您可以选择有偿服务。

1. 超过三包有效期的；
2. 无三包凭证及有效发票的，但能够证明该产品在三包有效期内的除外；
3. 包修凭证上的型号与修理产品型号不符或者涂改的；
4. 非本公司特约维修人员拆动造成损坏的；
5. 因不可抗力造成损坏的；
6. 未按产品使用说明书要求使用、维护、保养而造成损坏的。保修期限鉴于产品部位、不同国家法律法规等差异，将有所不同。相关国家与区域的保修期限，请咨询 MOZA 官方或购买时联系的 MOZA 授权经销商。

